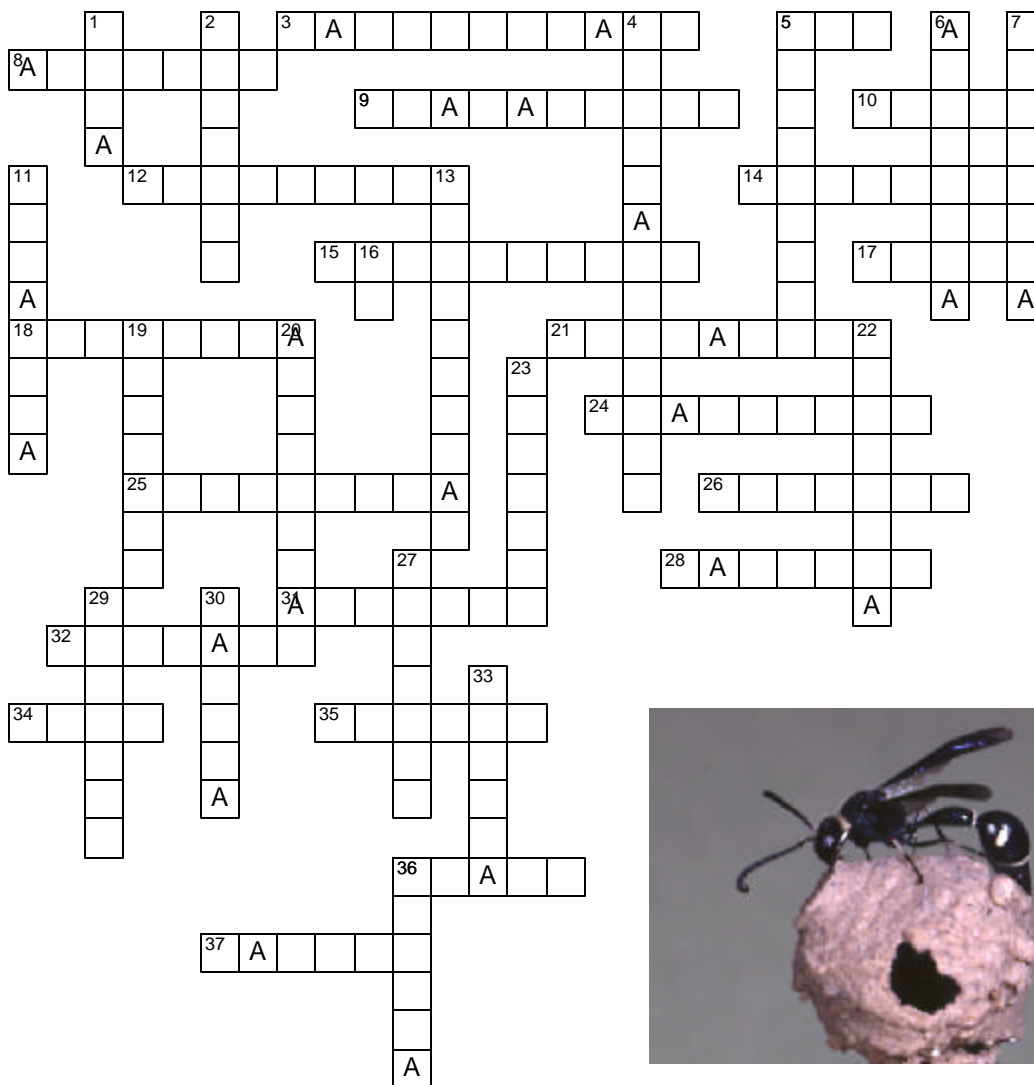


Name: \_\_\_\_\_



## Hymenoptera Terms

### Across

- |  |  |
|--|--|
| 3. Mouthparts  | 24. Distal antennal segments                             |
| 5. Prefix meaning the anterior part of a structure                             | 25. Pollen basket  |
| 8. Small cell in center of forewing, Ichneumonidae                             | 26. Medial sclerite of head above labrum                 |
| 9. Furrow on front wing anterior to and parallel with vein 1A                  | 28. Basal part of scape, often indicated by constriction |
| 9. Furrow on forewing anterior to vein 1A, extending to claval notch           | 31. Pad-like structure between tarsal claws              |
| 10. Dorsal area above face   | 32. Elevated posterior part of collum                    |
| 12. First abdominal segment  | 34. Number of wings on winged forms                      |
| 14. Symphyta, a paired, circular structure on sublateral portion of metascutum | 35. Dorsal surface of head between the eyes              |
| 15. Veins indicated by lowercase letters                                       | 36. First antennal segment                               |
| 17. Dorsal area  | 37. Anterior margin of hind wing                         |
| 18. Sawflies   |  |
| 21. Structure including tarsal claws and arolium                               |  |

### Down

- |  |   |
|--|---|
| 1. Ventral or lateral area below and behind the eye      | 22. Scutellum and postscutellum combined  |
| 2. Metasomal segment 1                                   | 23. Ventral area  |
| 4. Partial secondary basal division of femur             | 27. Lateral area  |
| 5. Sclerite of thorax between pronotum and mesepisternum | 29. Socket which attaches scape to front of head                                |
| 6. Other than the sawflies                               | 30. A ridge or raised line  |
| 7. Middle body   | 33. Small roundish sclerite covering base of fore wing                          |
| 11. Apparent abdomen                                     | 36. Sclerotized triangular or semicircular area on anterior margin of fore wing |
| 13. Segment to which forewings are attached              |   |
| 16. Anterior branch of radius vein                       |   |
| 19. Second antennal segment                              |   |
| 20. Segments of veins                                    |   |

**P. M. Choate**