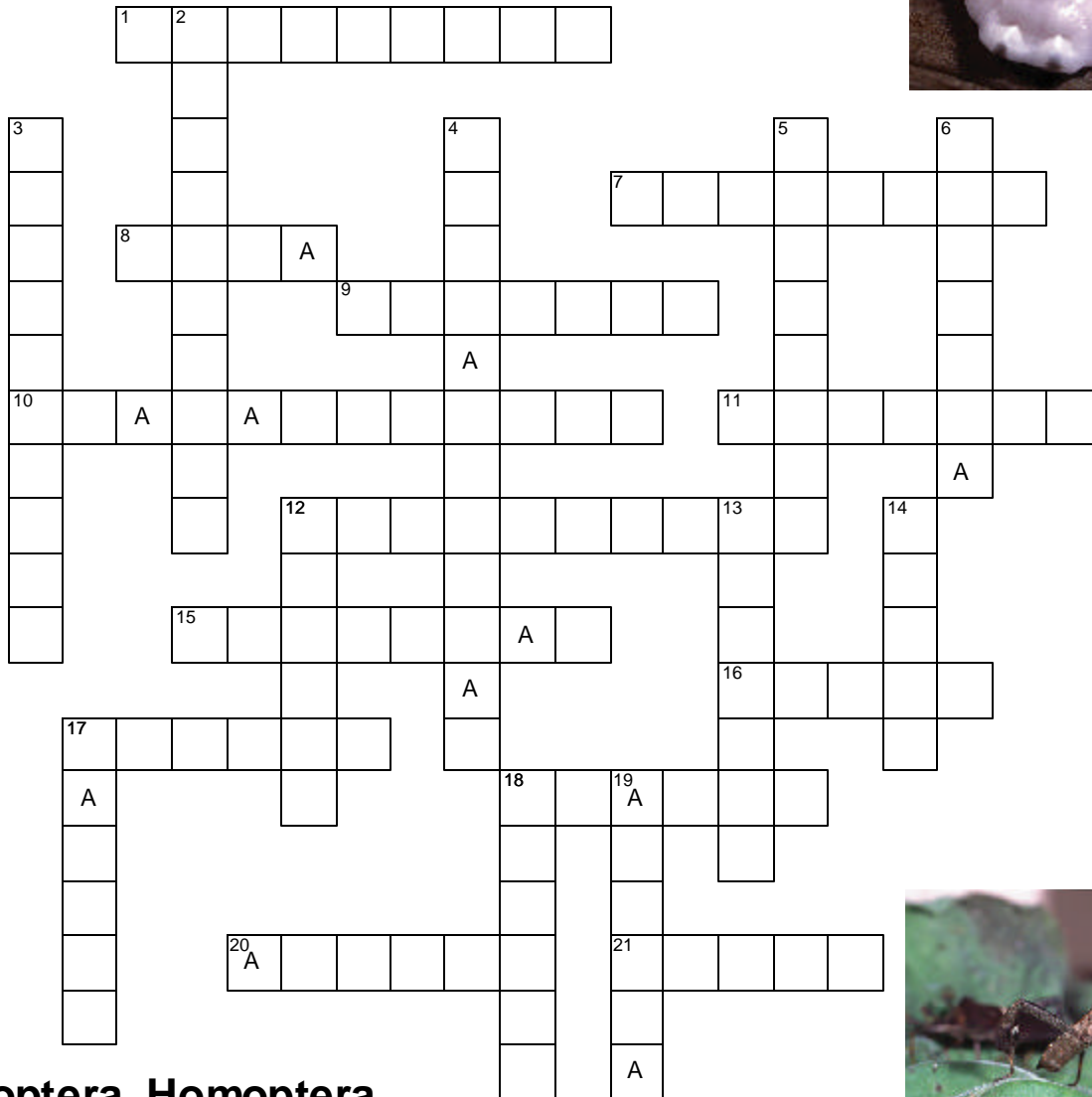


Name: _____



Heteroptera, Homoptera

Across

1. Triangular part of mesothorax, generally placed between bases of hemelytra
7. Differentiated costal part of corium in forewing of some Heteroptera
8. Part of head on each side below the eyes
9. Lateral metasternal external opening of stink glands, placed near coxa
10. Suture at base of hemelytra, separating the clavus
11. Simple eye
12. Line of union where hemelytra meet along clavus below apex of scutellum
15. Family with tarsal claws attaching well before apex of last tarsal segment
16. Distal part of the clypeus or anteclypeal region
17. The neck or collar
18. Sharply pointed anal area of hemelytra next to scutellum when folded
20. Area enclosed by veins on hemelytra
21. Plate or sclerite on outer side of jugae in front of the eyes

Down

2. Prominent abdominal margin at junction of dorsal and ventral plates
3. Anterior part of mesothorax, lying under edge of prothorax
4. Stink bugs
5. Abdominal structures on most Aphids
6. Elevated ridge or plate on under side of head on each side of rostrum
12. Elongate middle section of hemelytra extending from base to membrane below the embolium
13. The beak
14. Area on side of head beneath antennal insertion
17. Thickened or raised spots on thorax, especially Pentatomidae
18. Small triangular area at end of embolium
19. Cushion-like pads on tarsi



P. M. Choate