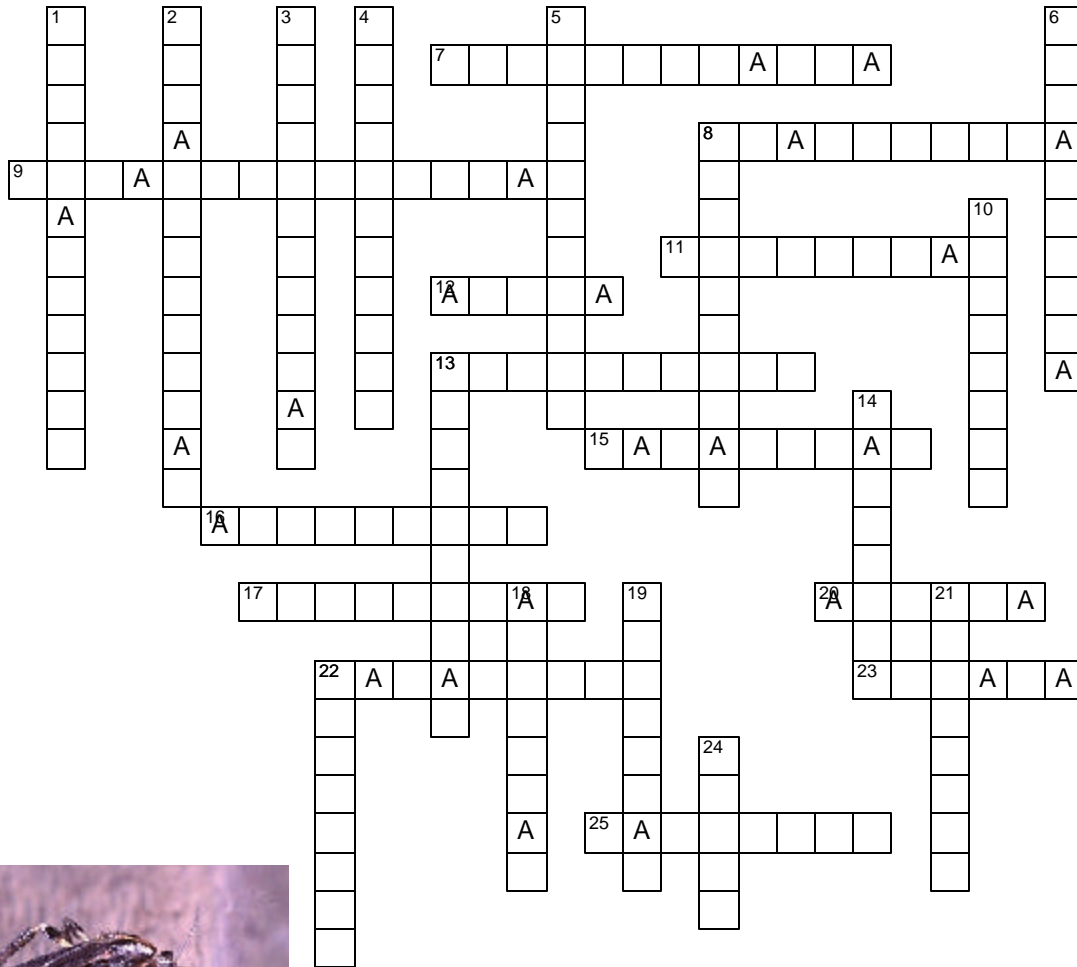


Name: \_\_\_\_\_



## Diptera (Comprehensive)

### Across

- |  |  |
|--|--|
| 7. Suborder containing Syrphidae           | 17. Mosquito family  |
| 8. Suborder containing deer flies          | 20. Terminal hair-like portion of the antennae in higher Diptera |
| 9. Family name means "flying teeth"        | 22. Tachinidae   |
| 11. Crane fly family                       | 23. A small scale above the halter                               |
| 12. Expanded axillary membrane of the wing | 25. The alula or squama when it covers the halter                |
| 13. Psychodidae                            |  |
| 15. Deer fly family                        |  |
| 16. Malaria                                |  |

### Down

- |  |   |
|--|---|
| 1. <i>Culex</i> , vectors  | 24. A thickened jointed arista at or near the tip of the third antennal segment |
| 2. Soldier flies   |   |
| 3. Blind mosquitoes  |   |
| 4. aedes   |   |
| 5. Syrphidae   |   |
| 6. Suborder containing mosquitoes                                |   |
| 8. Lovebugs  |   |
| 10. Bombyliidae  |   |
| 13. Blackflies   |   |
| 14. Hind wings   |   |
| 18. Robber flies   |   |
| 19. House fly family   |   |
| 21. Vein characteristic of Syrphidae                             |   |
| 22. Used to push out a circular opening from one end of puparium |   |

P. M. Choate